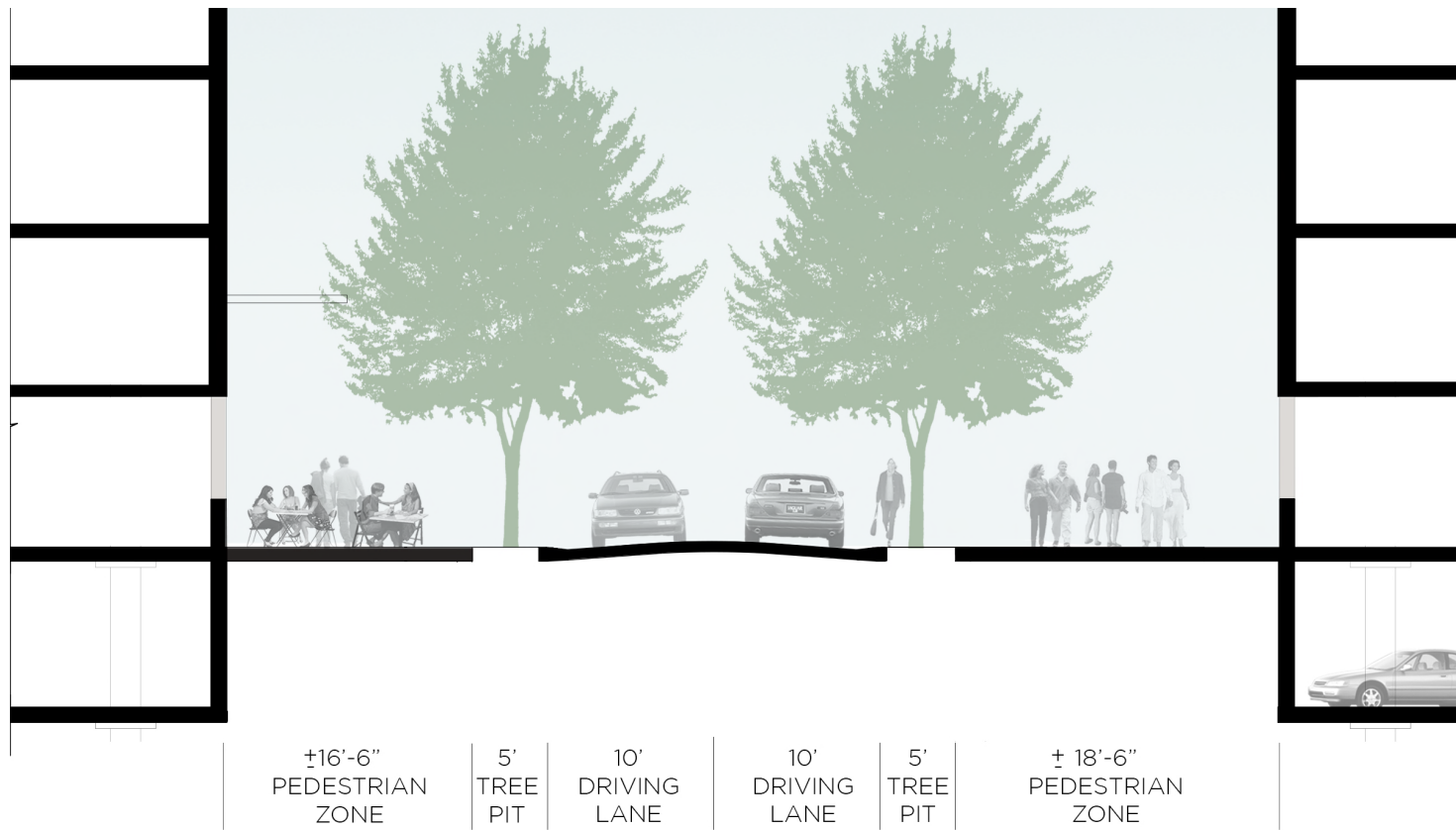
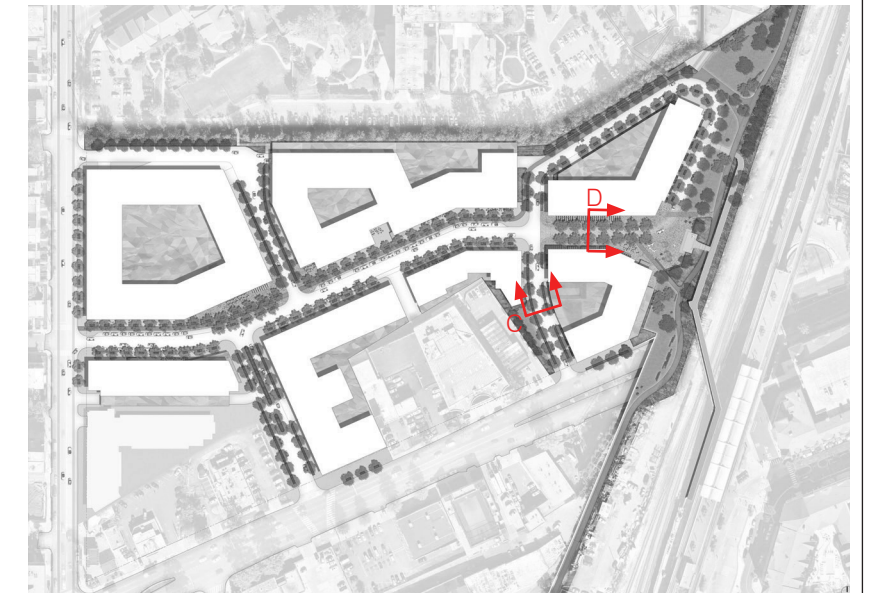


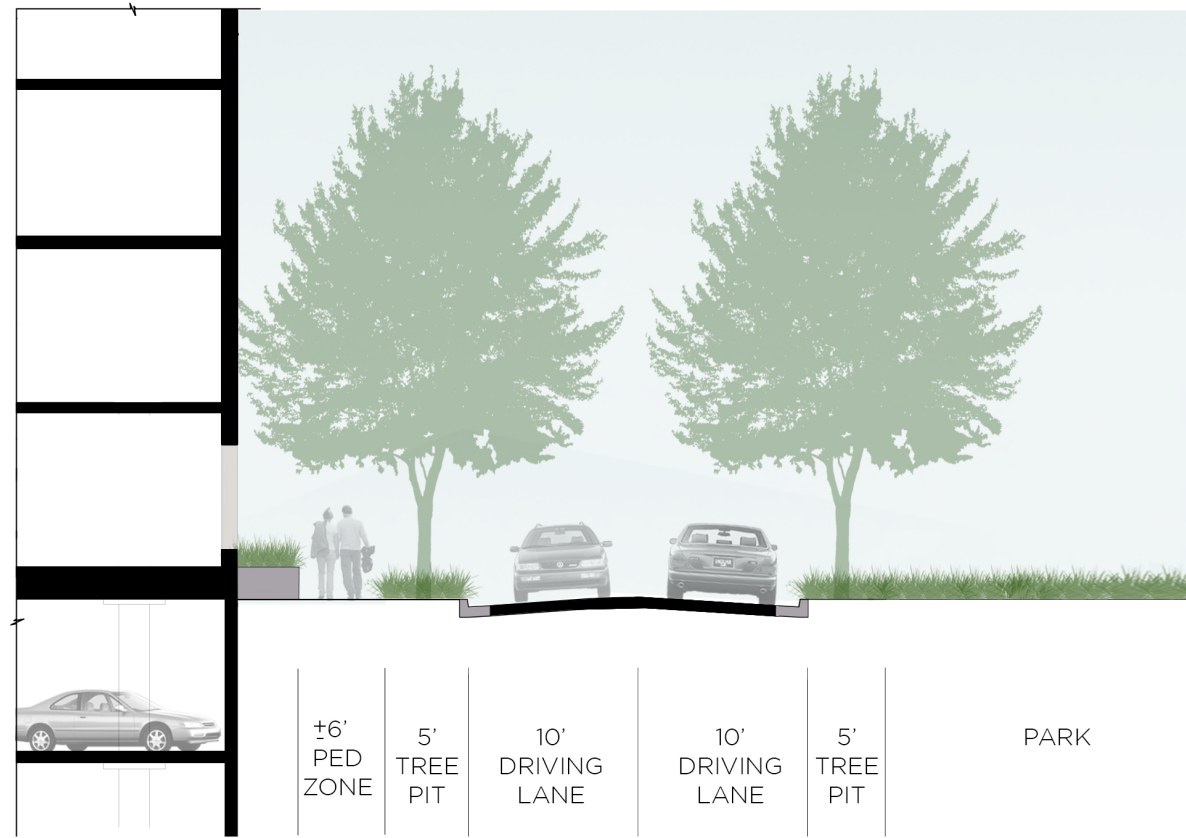
SECTION C



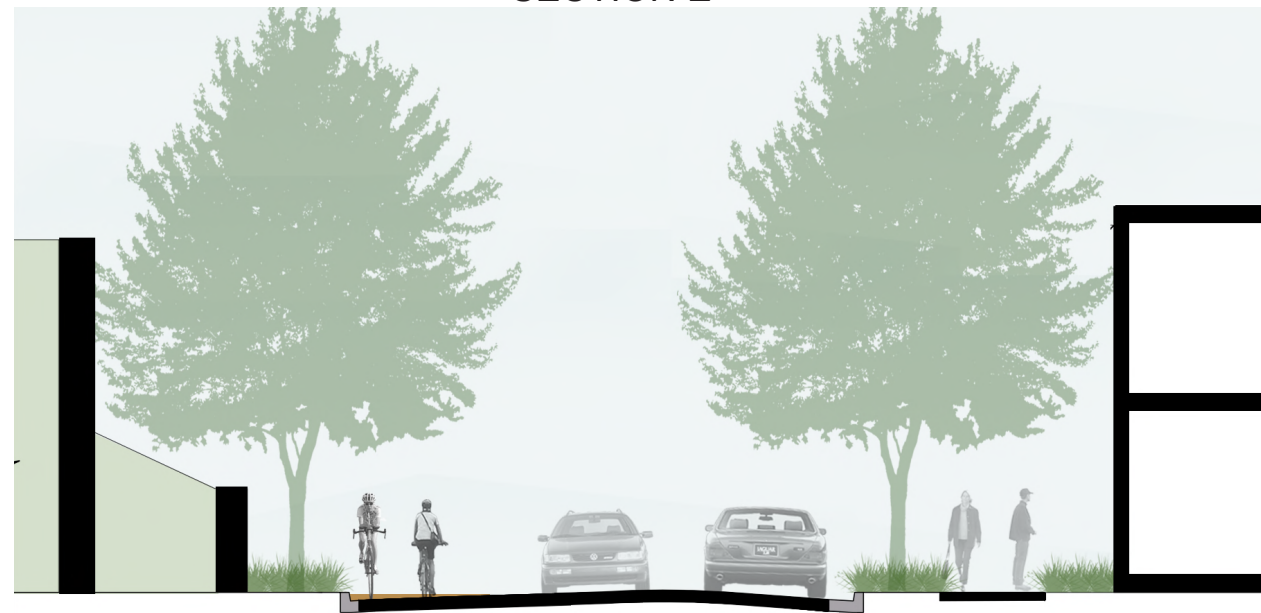
SECTION D



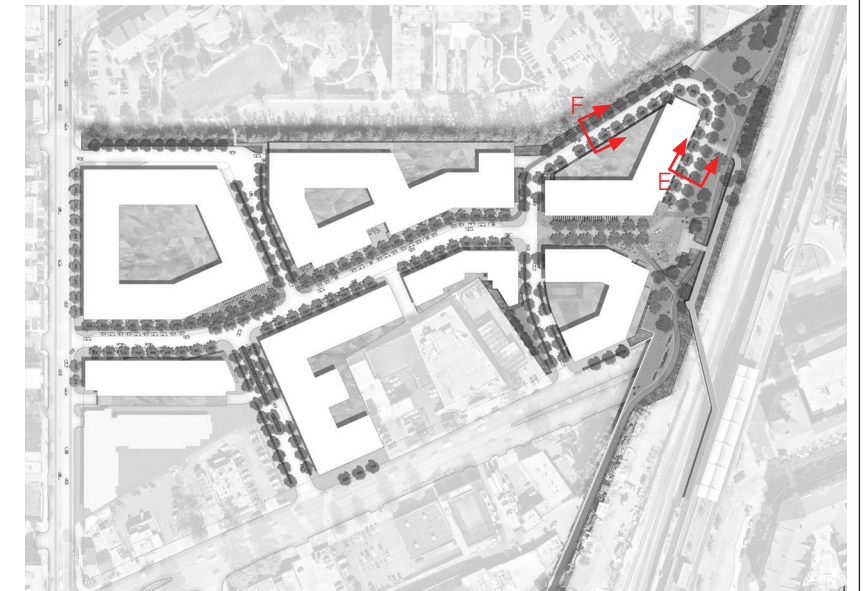
KEY PLAN



SECTION E

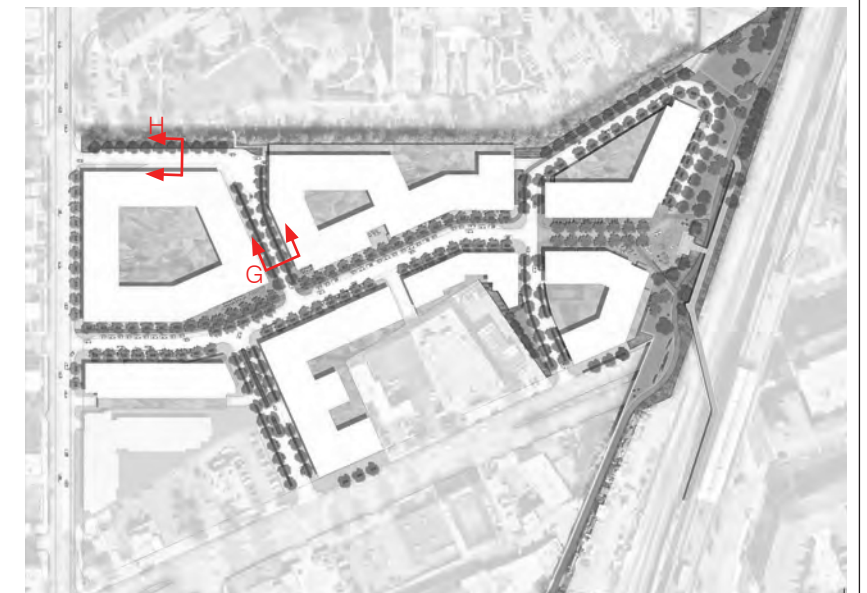
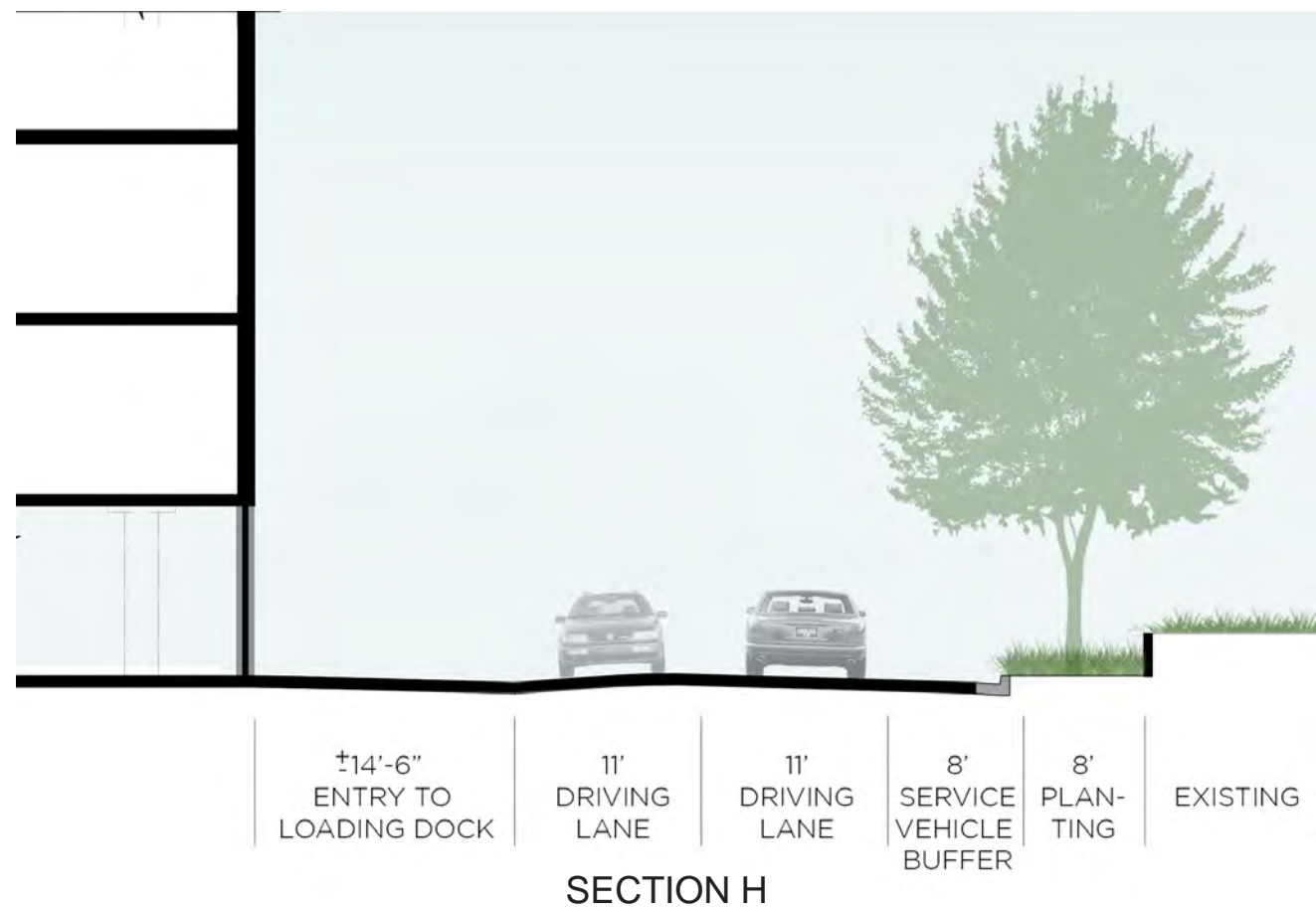
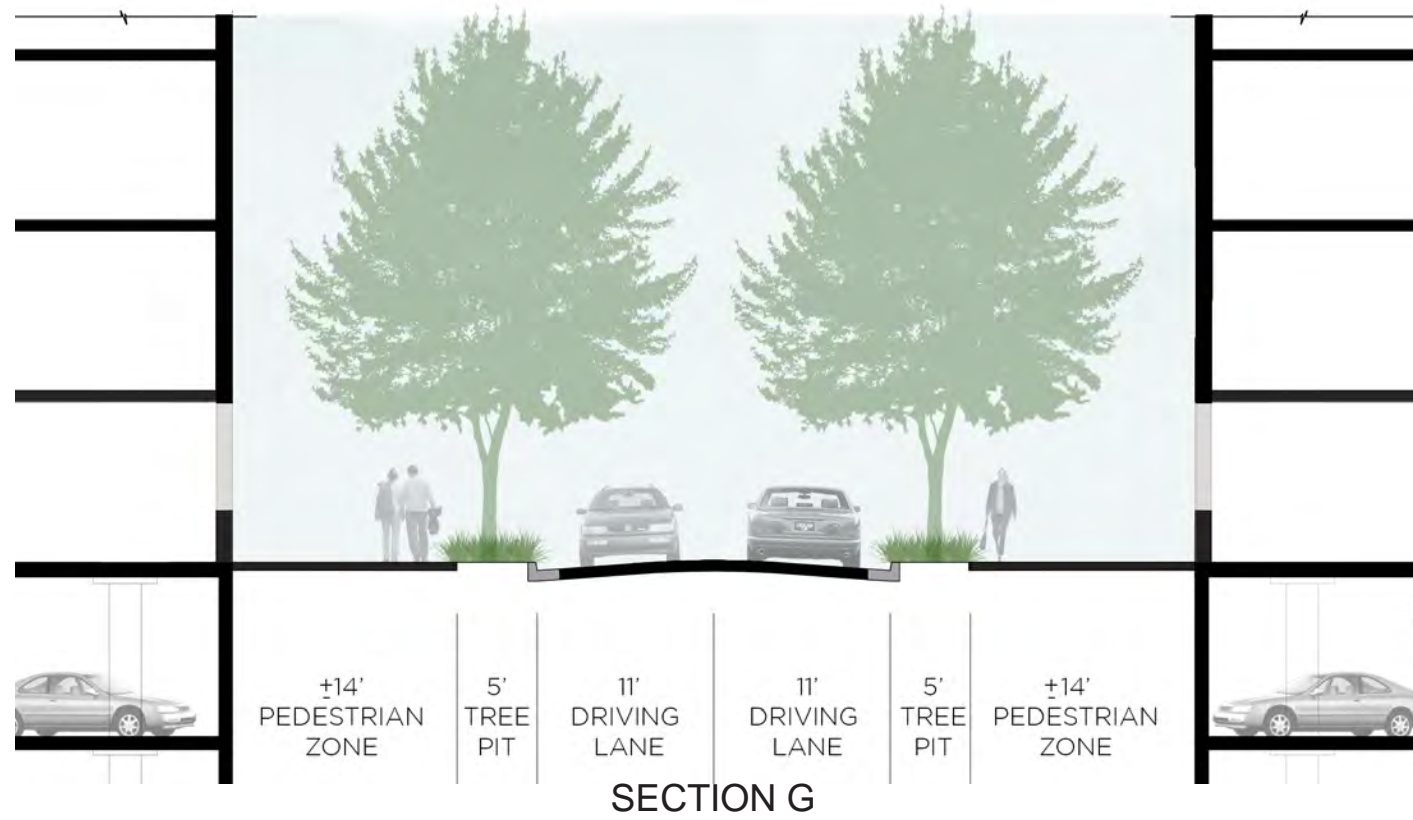


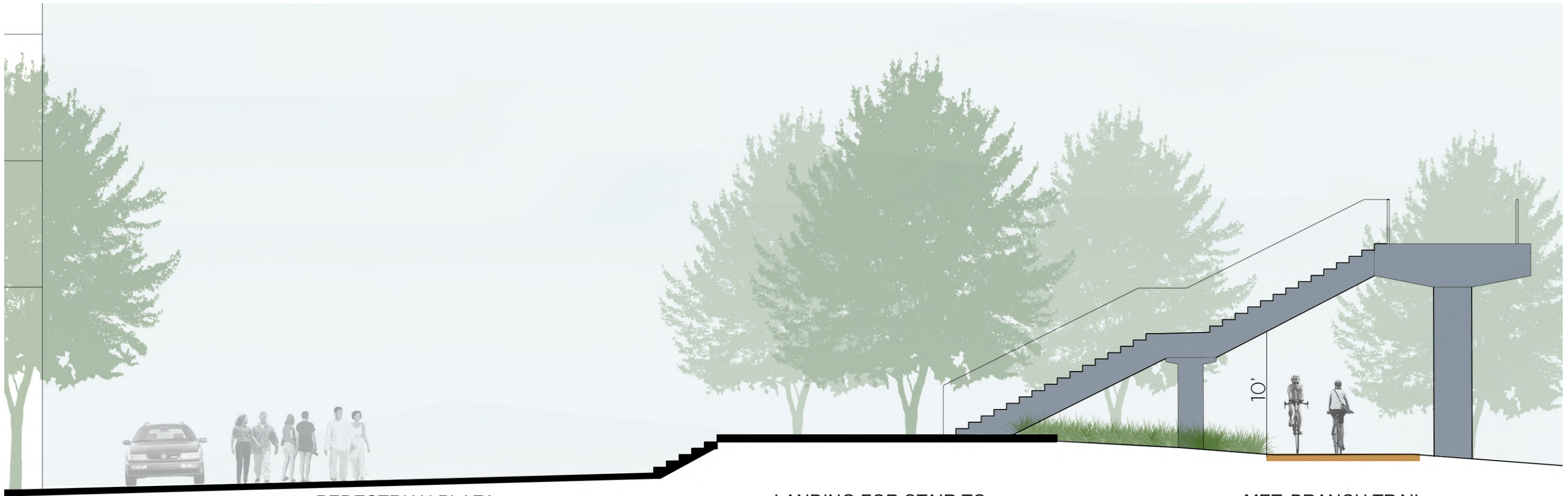
SECTION F



KEY PLAN



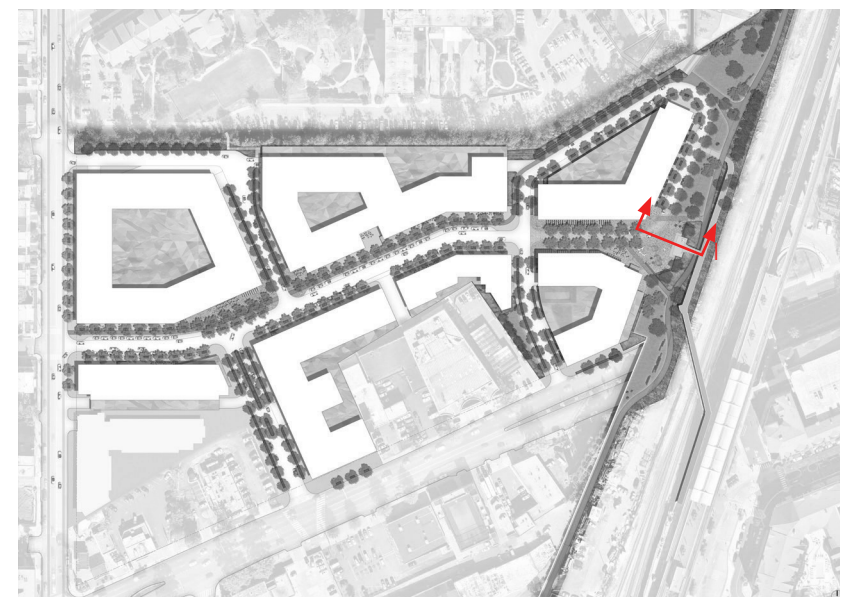




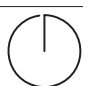
PEDESTRIAN PLAZA

LANDING FOR STAIR TO METRO

MET. BRANCH TRAIL



KEY PLAN





REQUIRED GAR: 0.250
 GAR SCORE: 0.252

Green Area Ratio Scoresheet		Ward	Lot	Square	Zoning District
Address: <input type="text"/>					
Other / BZA Order: <input type="text"/>					
Lot size (enter this value first) *		491,364		multiplier	
		SCORE		0.252	
Landscape Elements	Square Feet	Factor	Total		
A Landscaped areas (select one of the following for each area)					
1	Landscaped areas with a soil depth of less than 24"	<input type="text" value="0"/>	0.3	-	
2	Landscaped areas with a soil depth of 24" or greater	<input type="text" value="45188"/>	0.6	27,112.8	
3	Bioretention facilities	<input type="text" value="2993"/>	0.4	1,197.2	
B Plantings (credit for plants in landscaped areas from Section A)					
1	Groundcovers, or other plants less than 2' tall at maturity	<input type="text" value="11297"/>	0.2	2,259	
2	Plants, not including grasses, 2' or taller at maturity - calculated at 9 sq ft per plant (typically planted no closer than 18" on center)	<input type="text" value="12034"/>	108306	0.3	32,492
3	Tree canopy for all new trees 2.5" to 6" in diameter or equivalent - calculated at 50 sq ft per tree	<input type="text" value="193"/>	9650	0.5	4,825.0
4	Tree canopy for new trees 6" diameter or larger or equivalent - calculated at 250 sq ft per tree	<input type="text" value="0"/>	0	0.6	-
5	Tree canopy for preservation of existing tree 6" to 12" in diameter or larger or equivalent - calculated at 250 sq ft per tree	<input type="text" value="0"/>	0	0.7	-
6	Tree canopy for preservation of existing tree 12" to 18" in diameter or larger or equivalent - calculated at 600 sq ft per tree	<input type="text" value="0"/>	0	0.7	-
7	Tree canopy for preservation of all existing trees 18" to 24" in diameter or equivalent - calculated at 1300 sq ft per tree	<input type="text" value="0"/>	0	0.7	-
8	Tree canopy for preservation of all existing trees 24" in diameter or larger or equivalent - calculated at 2000 sq ft per tree	<input type="text" value="0"/>	0	0.8	-
9	Vegetated wall, plantings on a vertical surface	<input type="text" value="0"/>	0.6	-	
C Vegetated or "green" roofs					
1	Over at least 2" and less than 8" of growth medium	<input type="text" value="0"/>	0.6	-	
2	Over at least 8" of growth medium	<input type="text" value="57000"/>	0.8	45,600.0	
D Permeable Paving***					
1	Permeable paving over at least 6" and less than 24" of soil or gravel	<input type="text" value="0"/>	0.4	-	
2	Permeable paving over at least 24" of soil or gravel	<input type="text" value="0"/>	0.5	-	
E Other					
1	Enhanced tree growth systems***	<input type="text" value="19700"/>	0.4	7,880.0	
2	Renewable energy generation	<input type="text" value="0"/>	0.5	-	
3	Approved water features	<input type="text" value="0"/>	0.2	-	
		sub-total of sq ft = 254,134			

